

# Manifold Recirculation System Prepiped 61-10 & 61-15 Mixing Valves with Recirculation Pump and Mounting Strut

61-10 and 61-15 valves  
are ASSE 1017 Approved

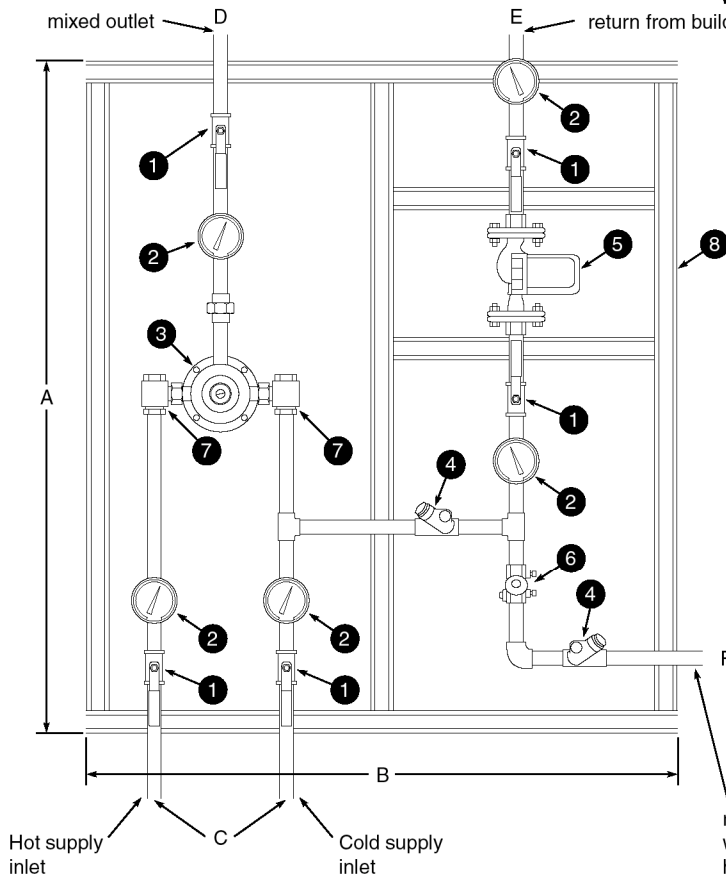


ASSE Lead Free Certified



Certified to  
CSA B125.3

Refer to the typical installation shown  
in the 61 series bulletin.



- 1. Full Port Ball Valve
- 2. Thermometer
- 3. Lawler 61-10 or 61-15 Series Valve
- 4. Check Valve
- 5. Recirculation Pump
- 6. Circuit Setting Balancing Valve
- 7. Stop & Check Valve
- 8. Epoxy-coated Strut

Exposed mixing valve shall be of the thermostatic type with liquid-filled motor. In the event of interruption of hot or cold water supply or thermostat failure, the valve shall be designed to restrict flow by use of a sliding piston control mechanism with reverse seat closure. The valve shall maintain output temperature for changes in inlet pressures or temperature. Valve construction shall have bronze body and stainless steel piston and liner. Piped and cabinet assemblies which have a downstream shutoff device shall include union end stop and check valves with removable strainer on each inlet.

Mixing valve shall be incorporated into a pre-piped manifold system which includes a recirculating pump, circuit setting balancing valve, thermometers, ball valves and mounting strut.

TEMP. RANGE	SET POINT	
50° to 100°F	80°F	<input type="checkbox"/>
85° to 135°F	110°F	<input type="checkbox"/>
100° to 150°F	130°F	<input type="checkbox"/>

**DIMENSIONS:**

- A 34 1/2"
- B 27"
- C 61-10 1/2"
- C 61-15 1/2"
- D 61-10 1/2", 61-15 1/2"
- E To be specified by engineer
- F To be specified by engineer

**GPM CAPACITIES – Series 61**

Pressure Drop PSI	5	10	20	30	45	60	80
<b>Valve Number</b>	<b>Capacity-GPM</b>						
<b>61-10</b>	2.5	3.5	5.5	8.0	10	12	14
<b>61-15</b>	3.5	5.5	8.5	11	15	18	20

**LPM CAPACITIES – Series 61**

Pressure Drop PSI	5	10	20	30	45	60	80
<b>Valve Number</b>	<b>Capacity-LPM</b>						
<b>61-10</b>	9.4	13.2	22.8	30.3	37.8	45.4	53
<b>61-15</b>	13.2	20.8	32	41.6	56.7	68	75.7

Minimum flow is 1/2 gpm when properly installed.

Recirculation pipe size \_\_\_\_\_  
 Aquastat \_\_\_\_\_  
 Recirculation pump \_\_\_\_\_  
 Test connection and circulator power switch (optional)  
 \_\_\_\_\_



**MANUFACTURING CO., INC.**

5330 East 25th Street  
 Indianapolis, Indiana 46218  
 Phone (317) 261-1212  
 Fax (317) 261-1208

Design and specification subject to change without notice.