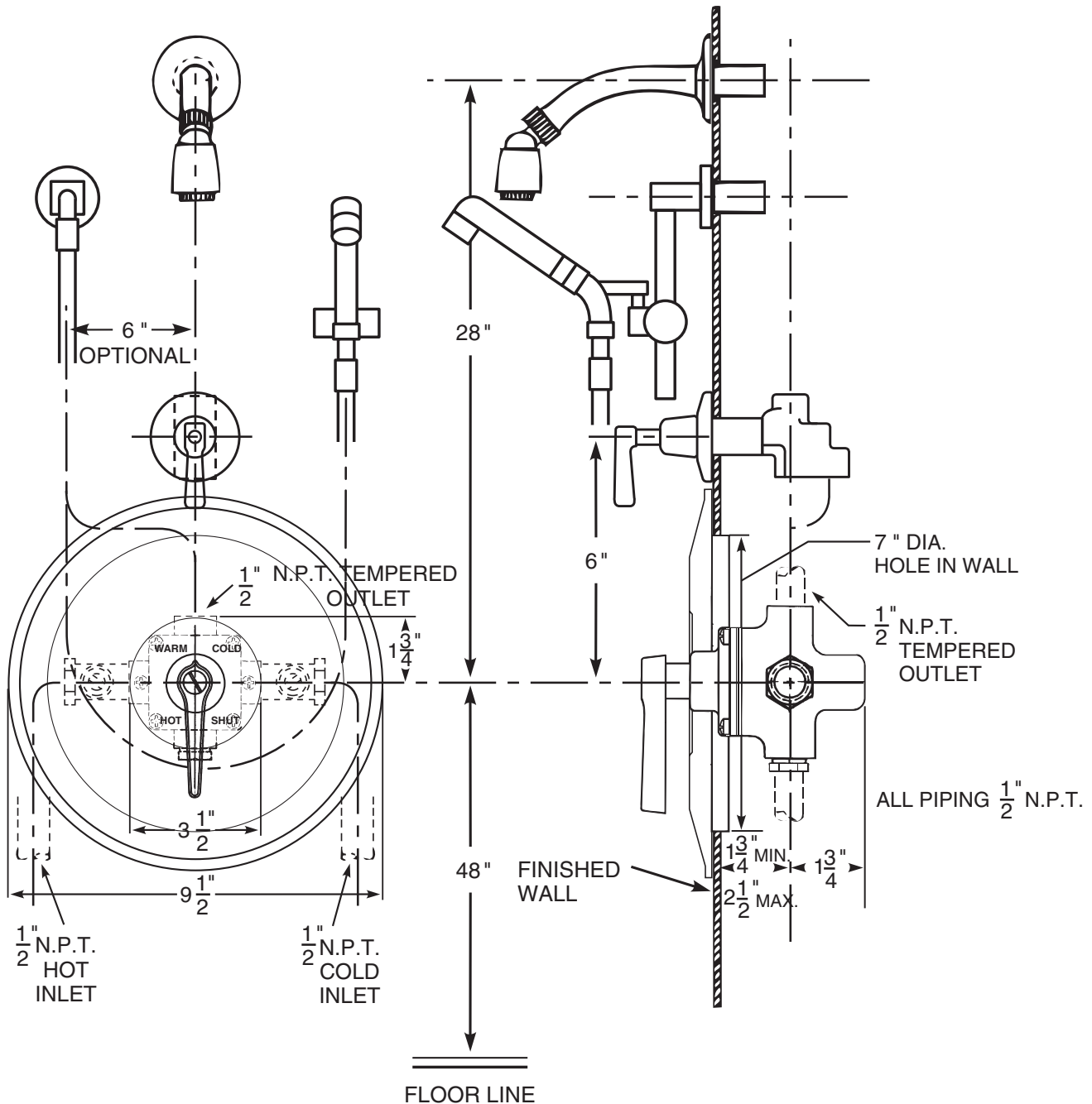


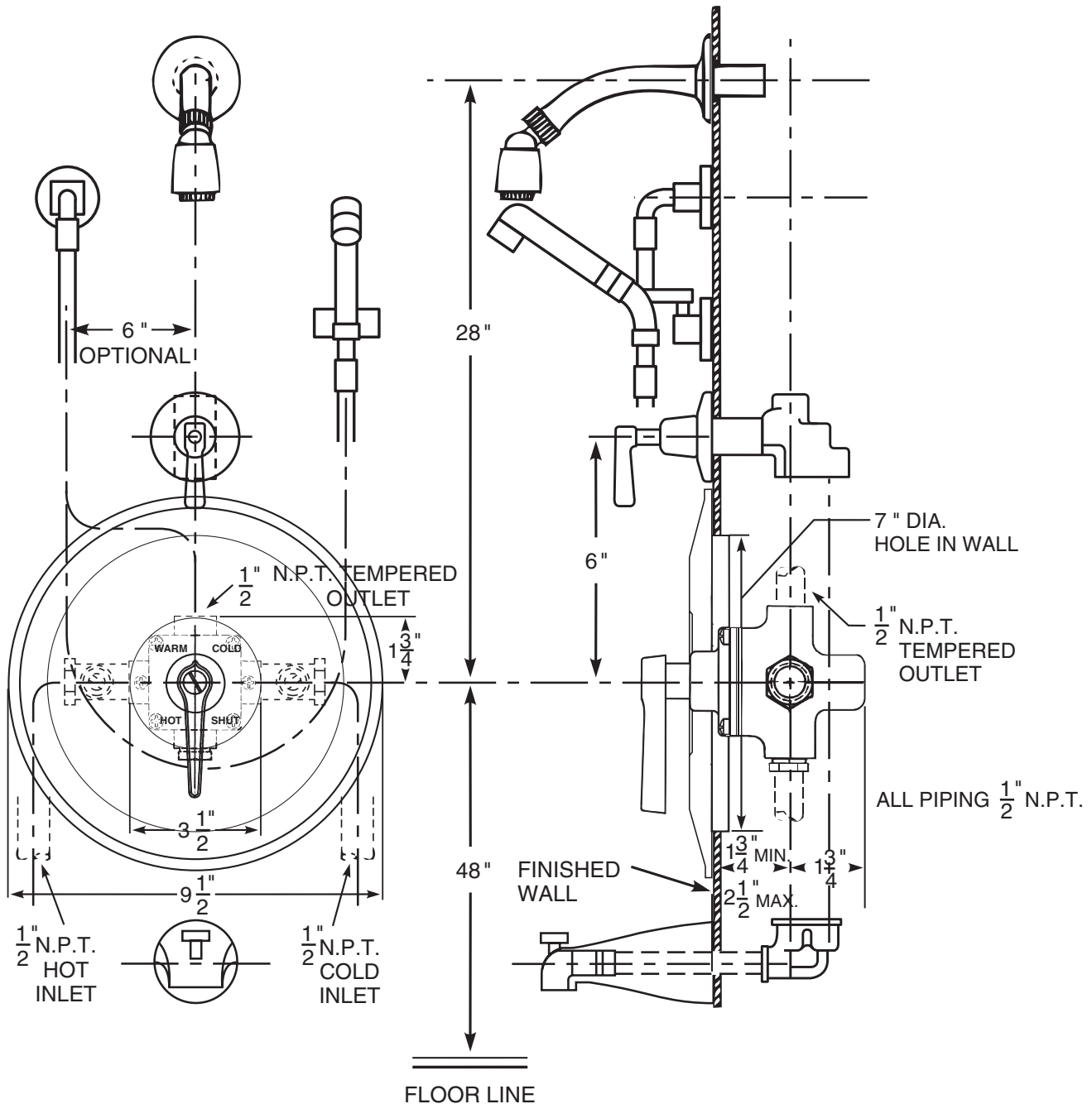
Series 3800 Shower Assembly

Series 3800 thermostatic mixing valve, SC1 straight stop and checks, SH1 shower head, arm and flange, HS3 hand spray and DV1 diverter valve. If the angle stop and checks with removable strainers are required, see ENG 3800 A for details.



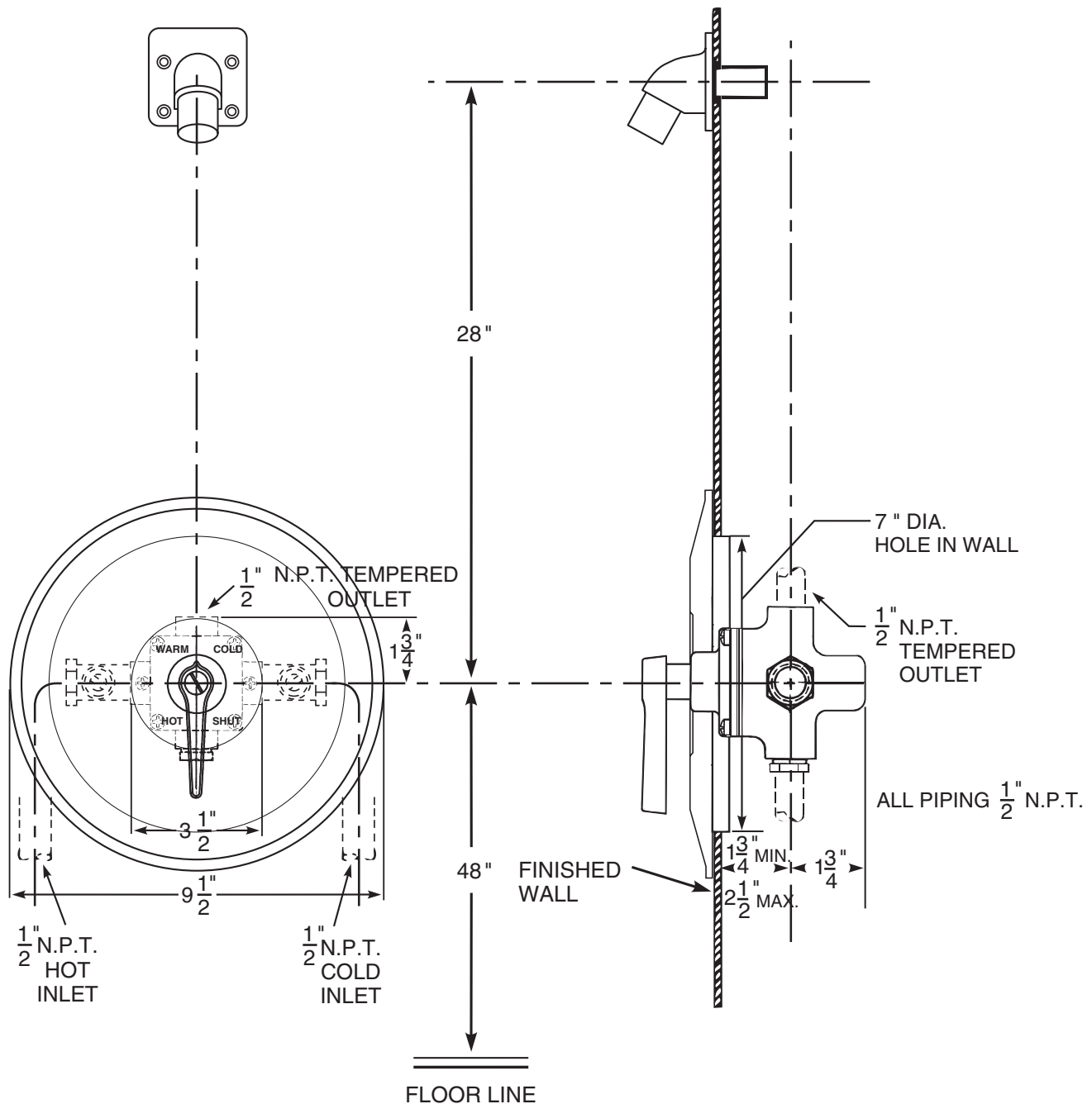
Series 3800 Shower Assembly

Series 3800 thermostatic mixing valve, SC1 straight stop and checks, SH1 shower head, arm and flange, HS1 hand spray, DV1 diverter valve and TF2 diverter tub filler. If the angle stop and checks with removable strainers are required, see ENG 3800 A for details.



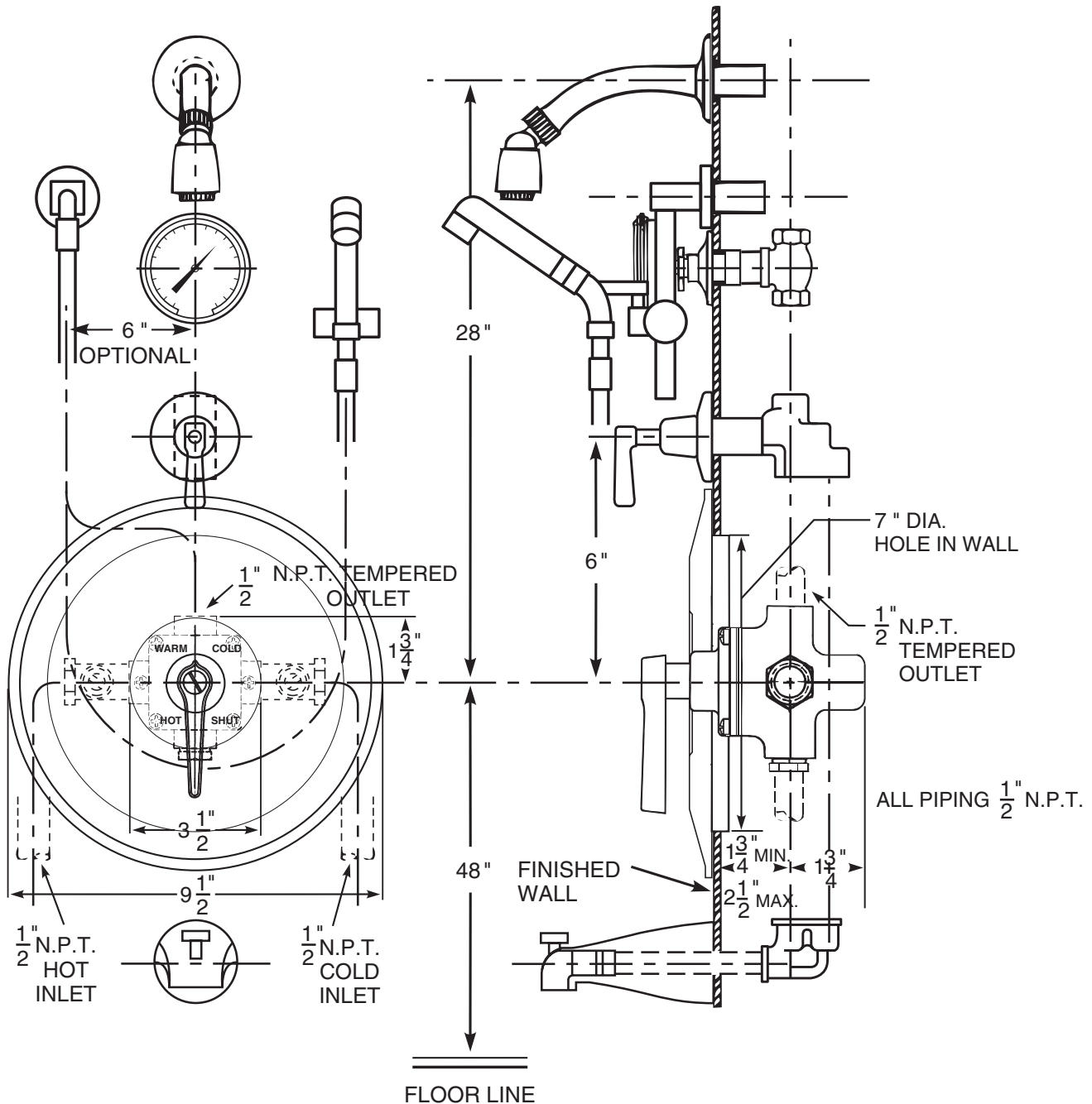
Series 3800 Shower Assembly

Series 3800 thermostatic mixing valve, SC1 straight stop and checks and SH6 shower head. If the angle stop and checks with removable strainers are required, see ENG 3800 A for details.



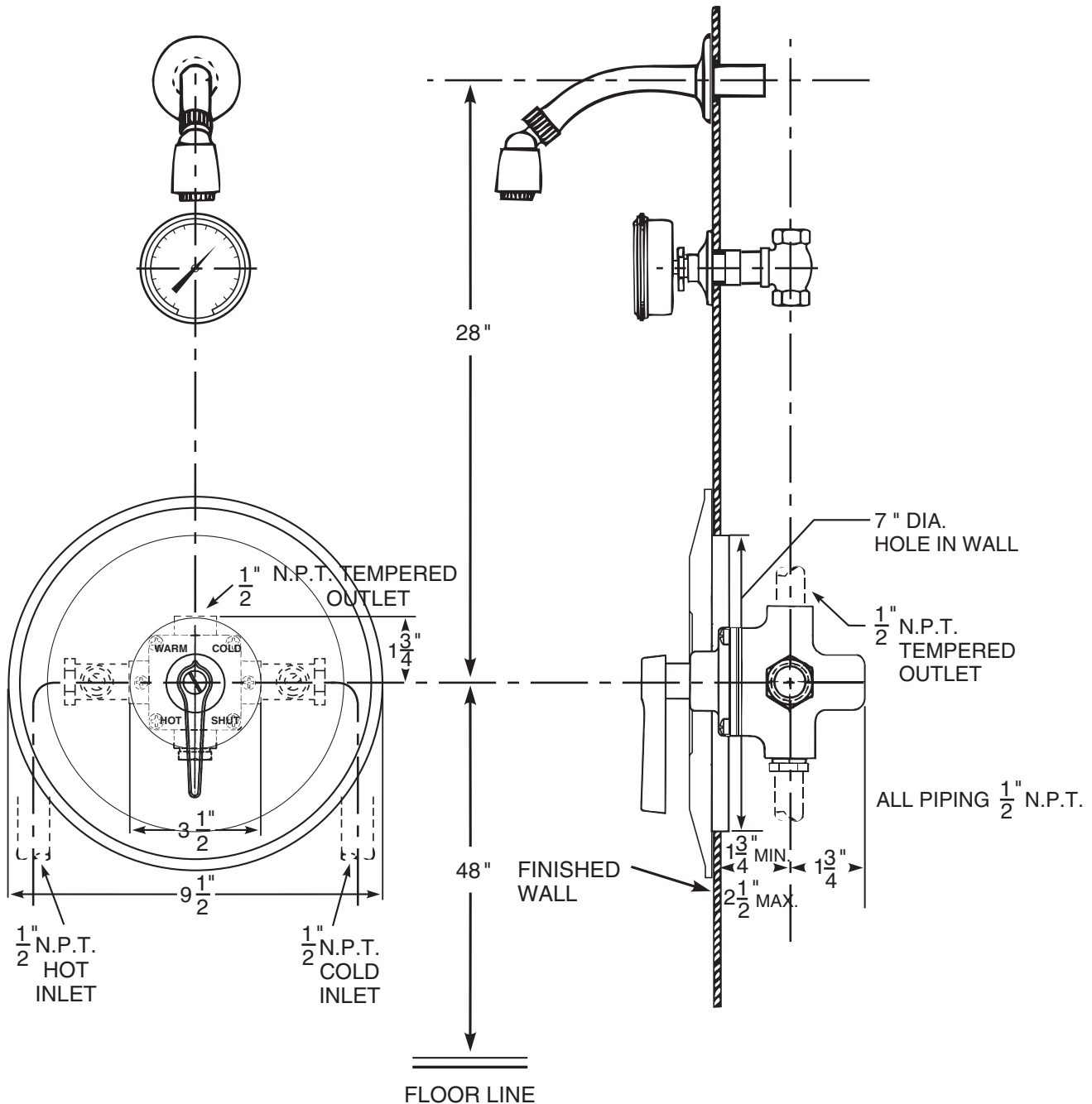
Series 3800 Shower Assembly

Series 3800 thermostatic mixing valve, SC1 straight stop and checks, SH1 shower head, arm and flange, HS3 hand spray, TH5 dial thermometer, DV1 diverter valve and TF2 diverter tub filler. If the angle stop and checks with removable strainers are required, see ENG 3800 A for details.



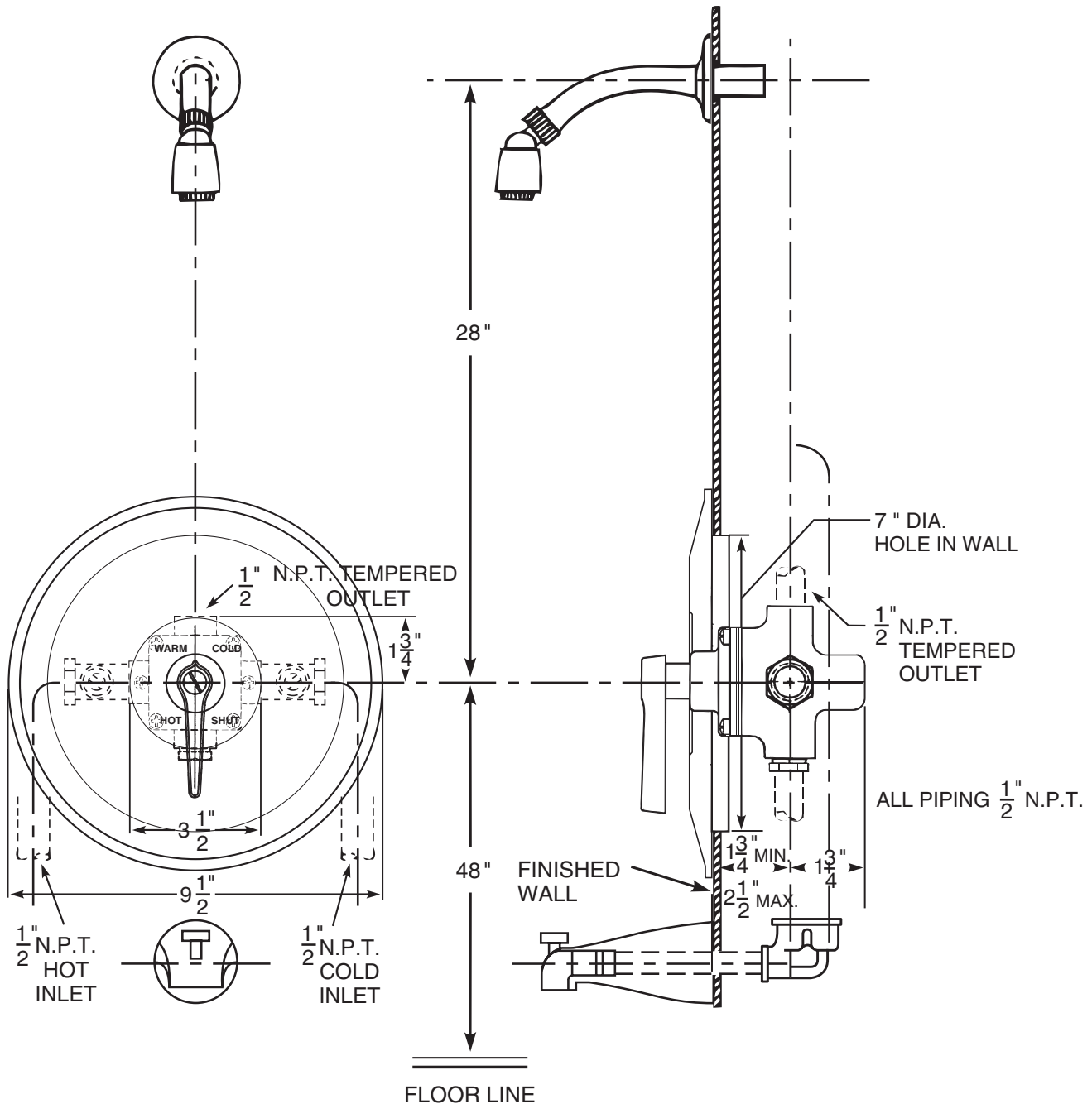
Series 3800 Shower Assembly

Series 3800 thermostatic mixing valve, SC1 straight stop and checks, SH1 shower head, arm and flange and TH5 dial thermometer. If the angle stop and checks with removable strainers are required, see ENG 3800 A for details.



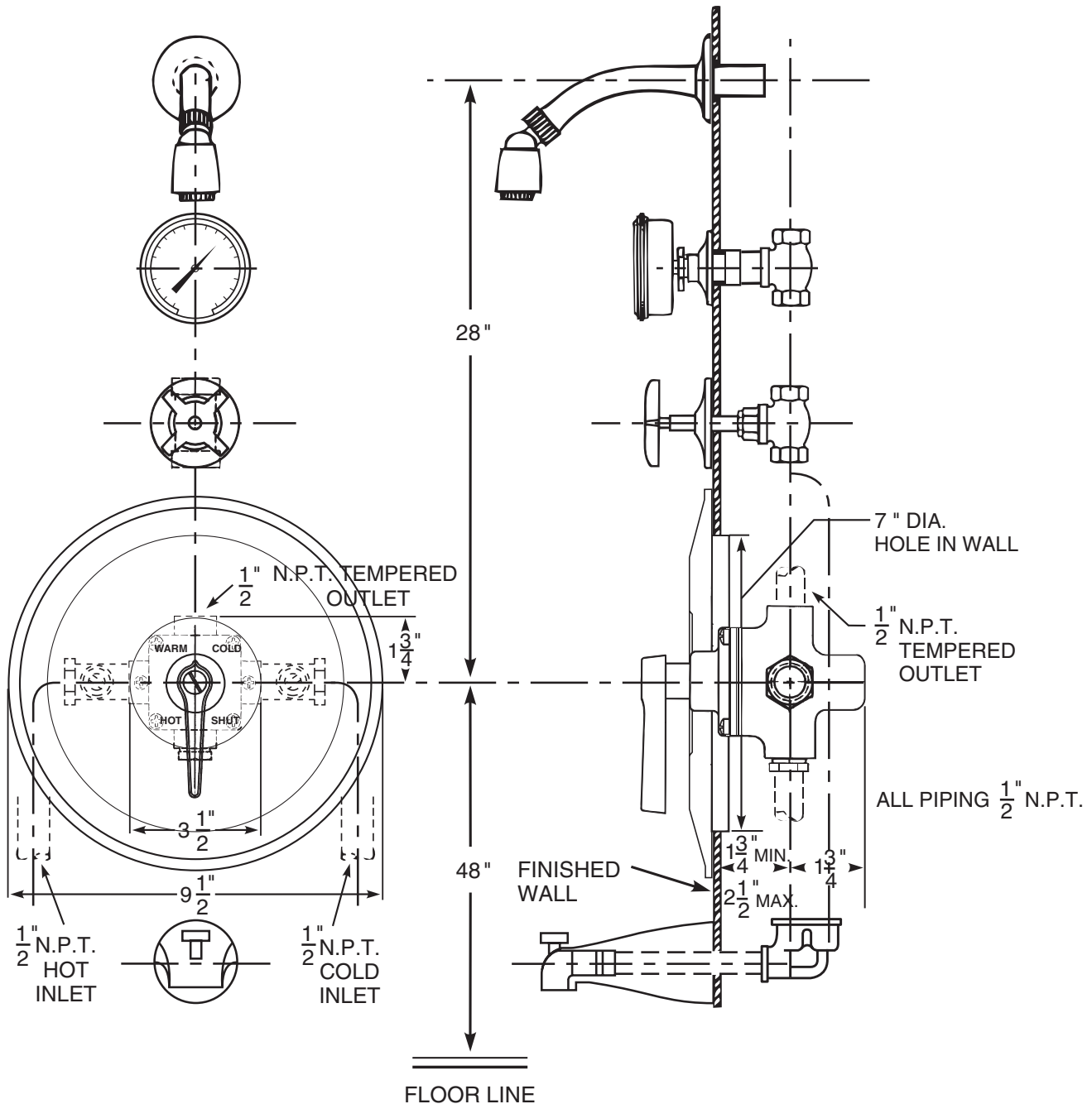
Series 3800 Shower Assembly

Series 3800 thermostatic mixing valve, SC1 straight stop and checks, SH1 shower head, arm and flange and TF2 diverter tub filler. If the angle stop and checks with removable strainers are required, see ENG 3800 A for details.



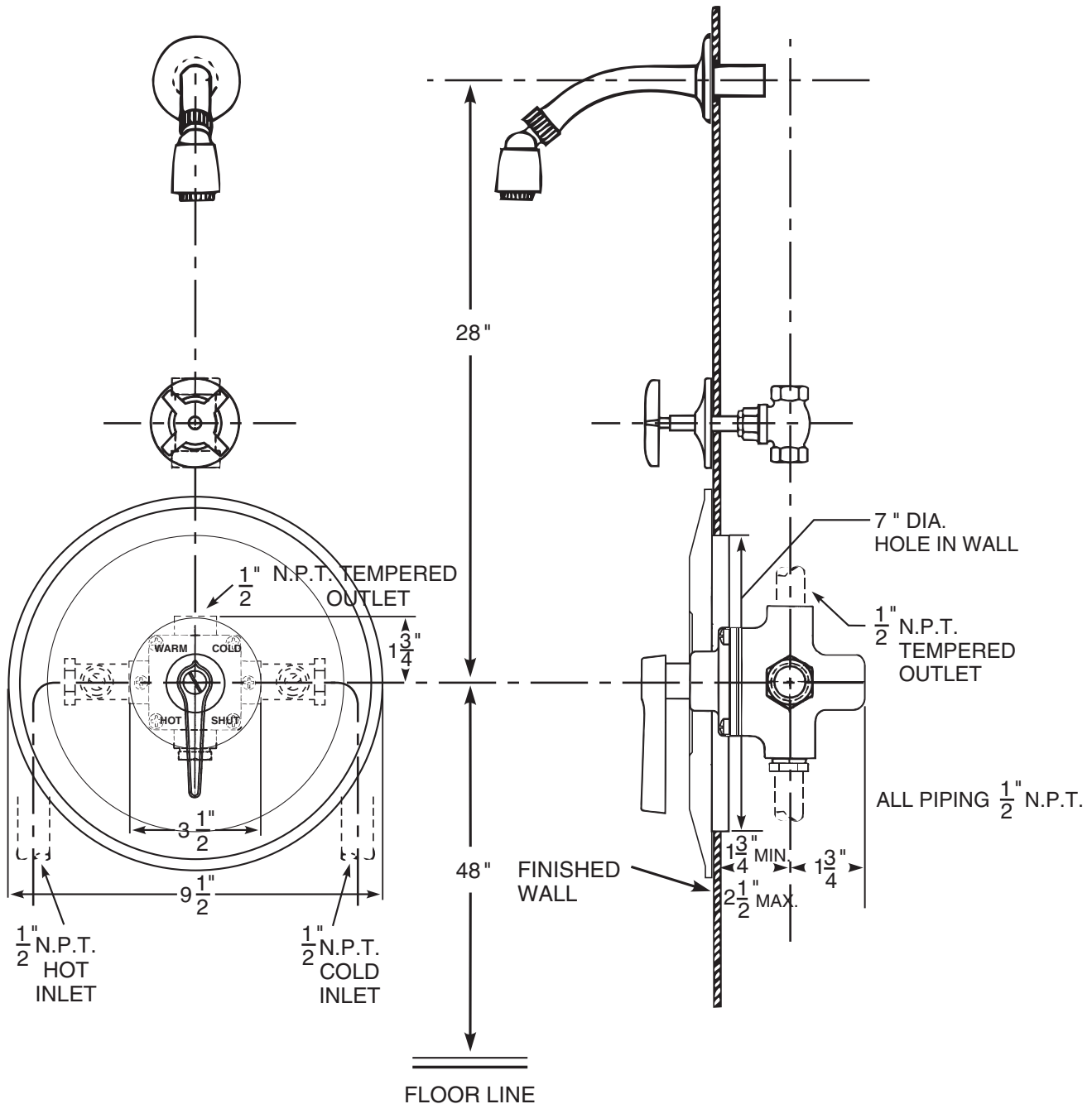
Series 3800 Shower Assembly

Series 3800 thermostatic mixing valve, SC1 straight stop and checks, SH1 shower head, arm and flange, TH5 dial thermometer, VC3 concealed volume control and TF2 diverter tub filler. If the angle stop and checks with removable strainers are required, see ENG 3800 A for details.



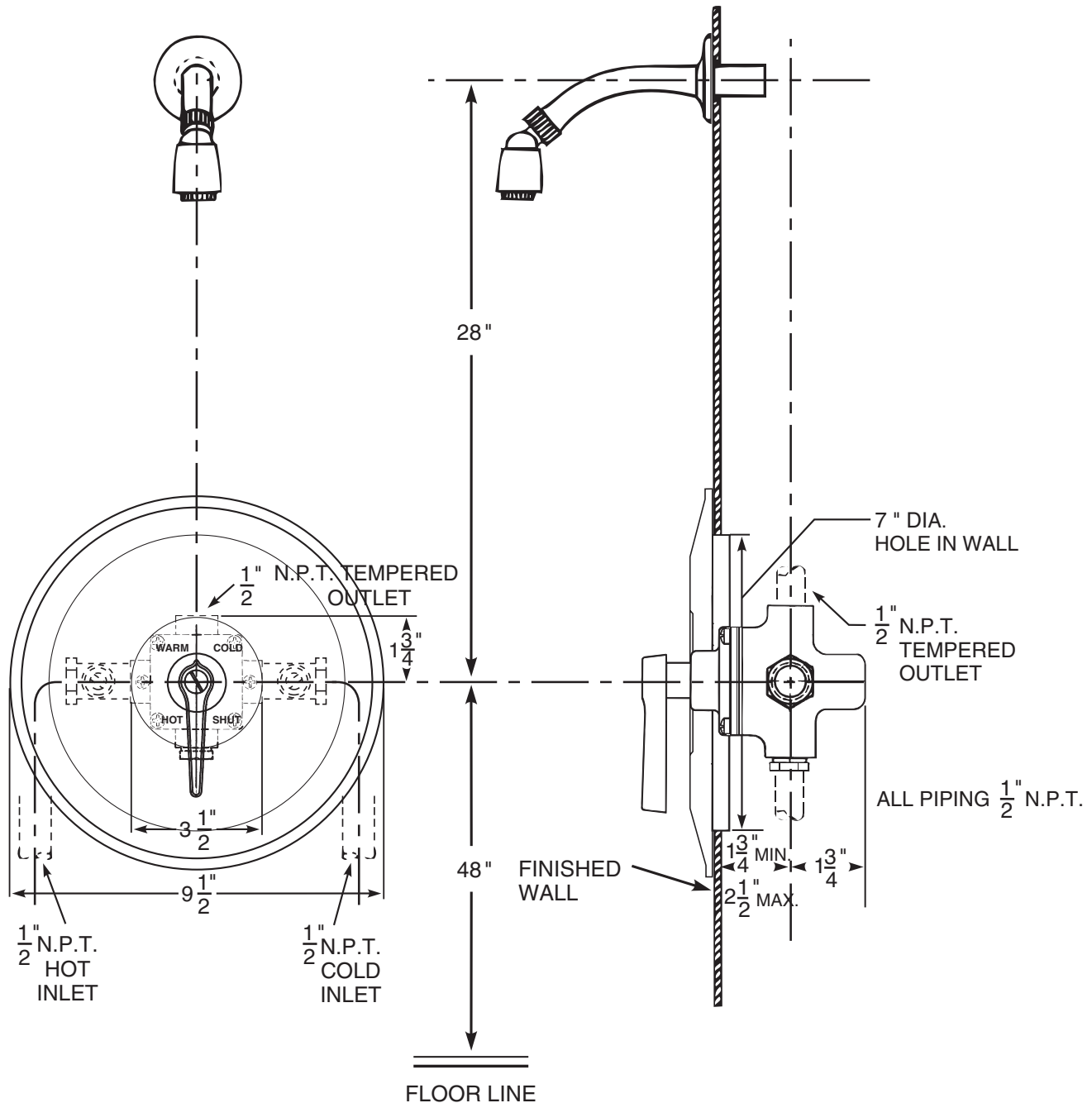
Series 3800 Shower Assembly

Series 3800 thermostatic mixing valve, SC1 straight stop and checks, SH1 shower head, arm and flange, and VC3 concealed volume control. If the angle stop and checks with removable strainers are required, see ENG 3800 A for details.



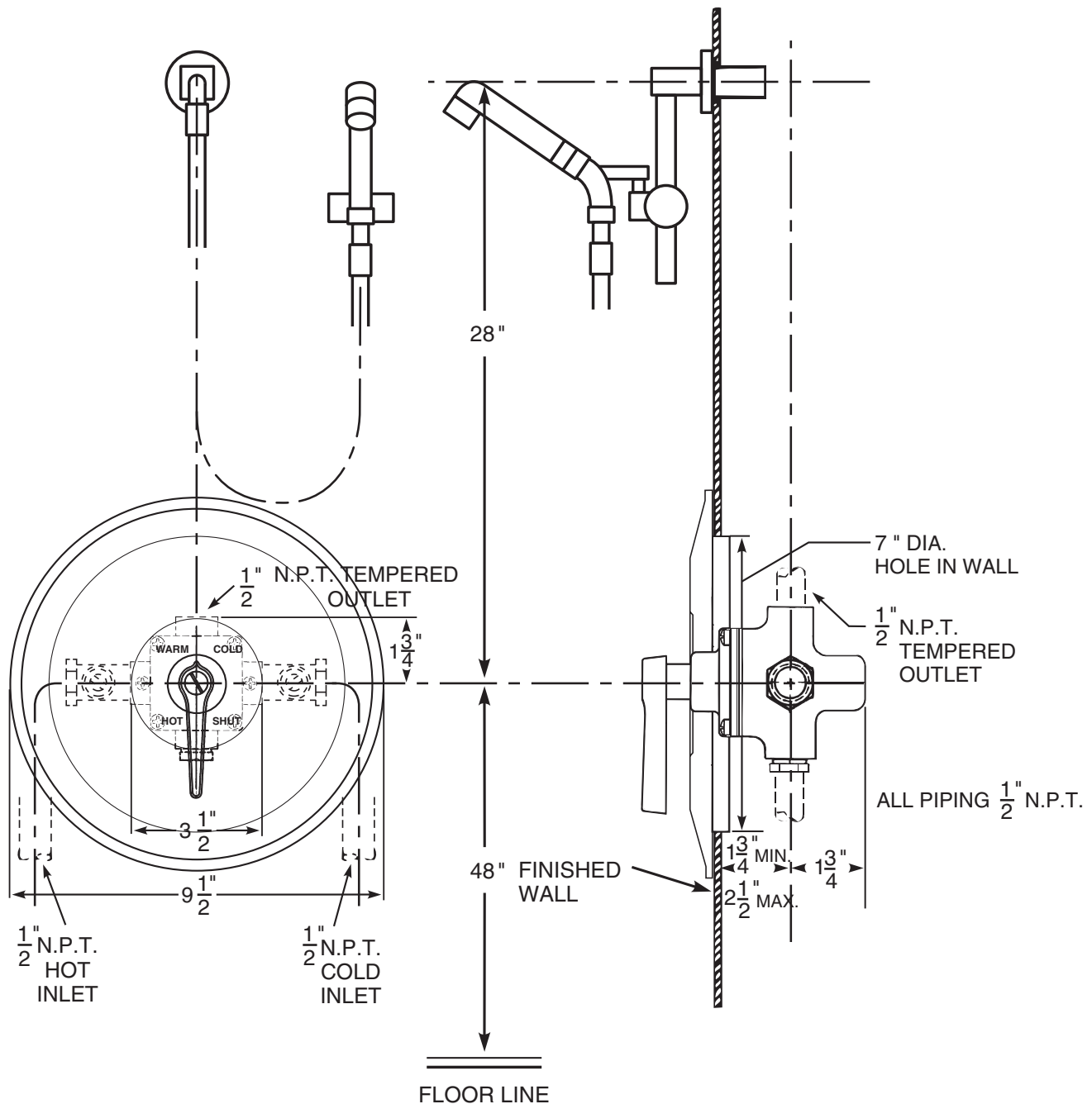
Series 3800 Shower Assembly

Series 3800 thermostatic mixing valve, SC1 straight stop and checks and SH1 shower head, arm and flange. If the angle stop and checks with removable strainers are required, see ENG 3800 A for details.



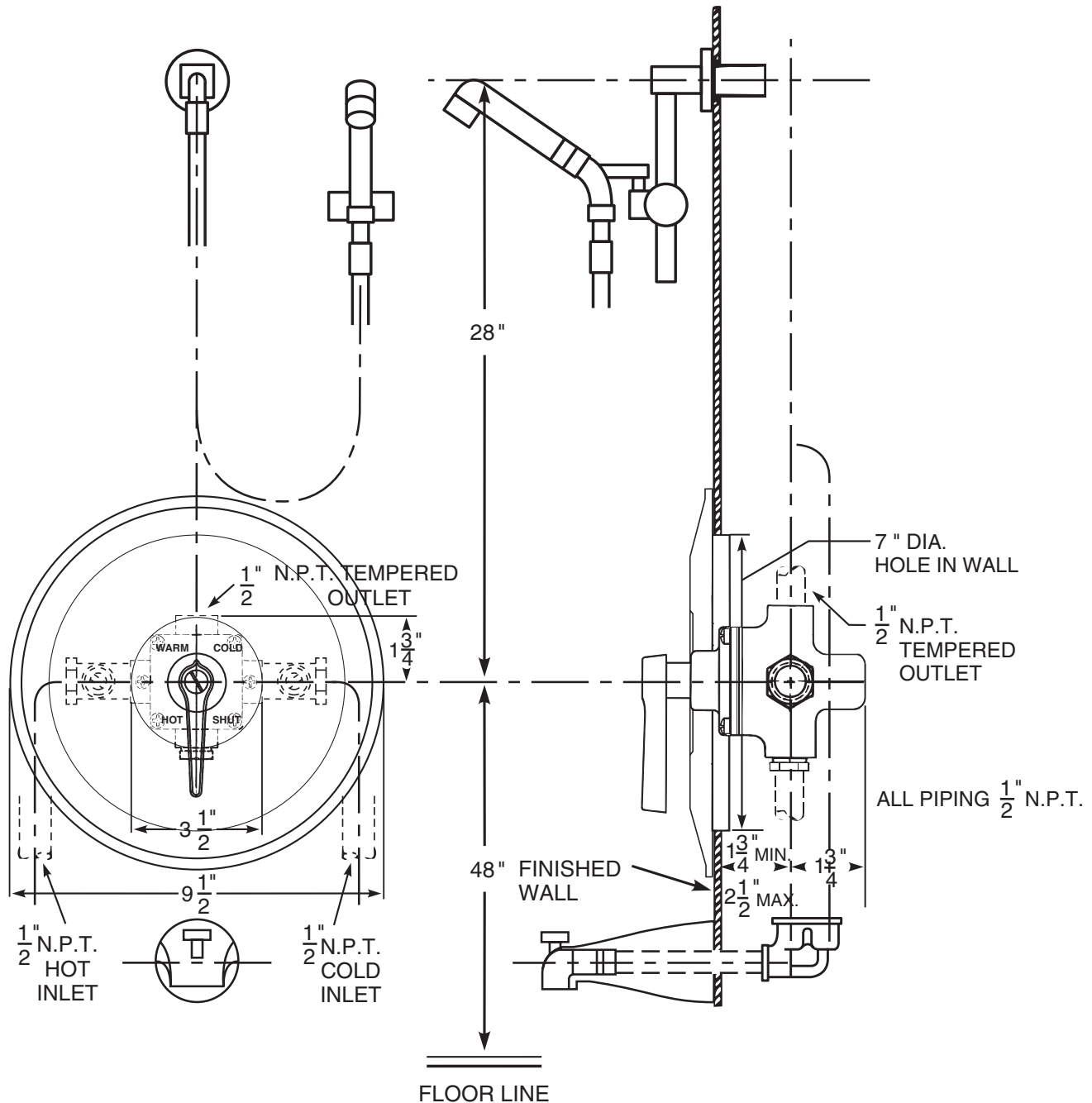
Series 3800 Shower Assembly

Series 3800 thermostatic mixing valve, SC1 straight stop and checks and HS3 hand spray. If the angle stop and checks with removable strainers are required, see ENG 3800 A for details.



Series 3800 Shower Assembly

Series 3800 thermostatic mixing valve, SC1 straight stop and checks and HS3 hand spray and TF2 diverter tub filler. If the angle stop and checks with removable strainers are required, see ENG 3800 A for details.



Series 3800 Shower Assembly

Series 3800 thermostatic mixing valve, SC1 straight stop and checks, SH6 institutional shower head, HS1 hand spray and DV1 diverter valve. If the angle stop and checks with removable strainers are required, see ENG 3800 A for details.

