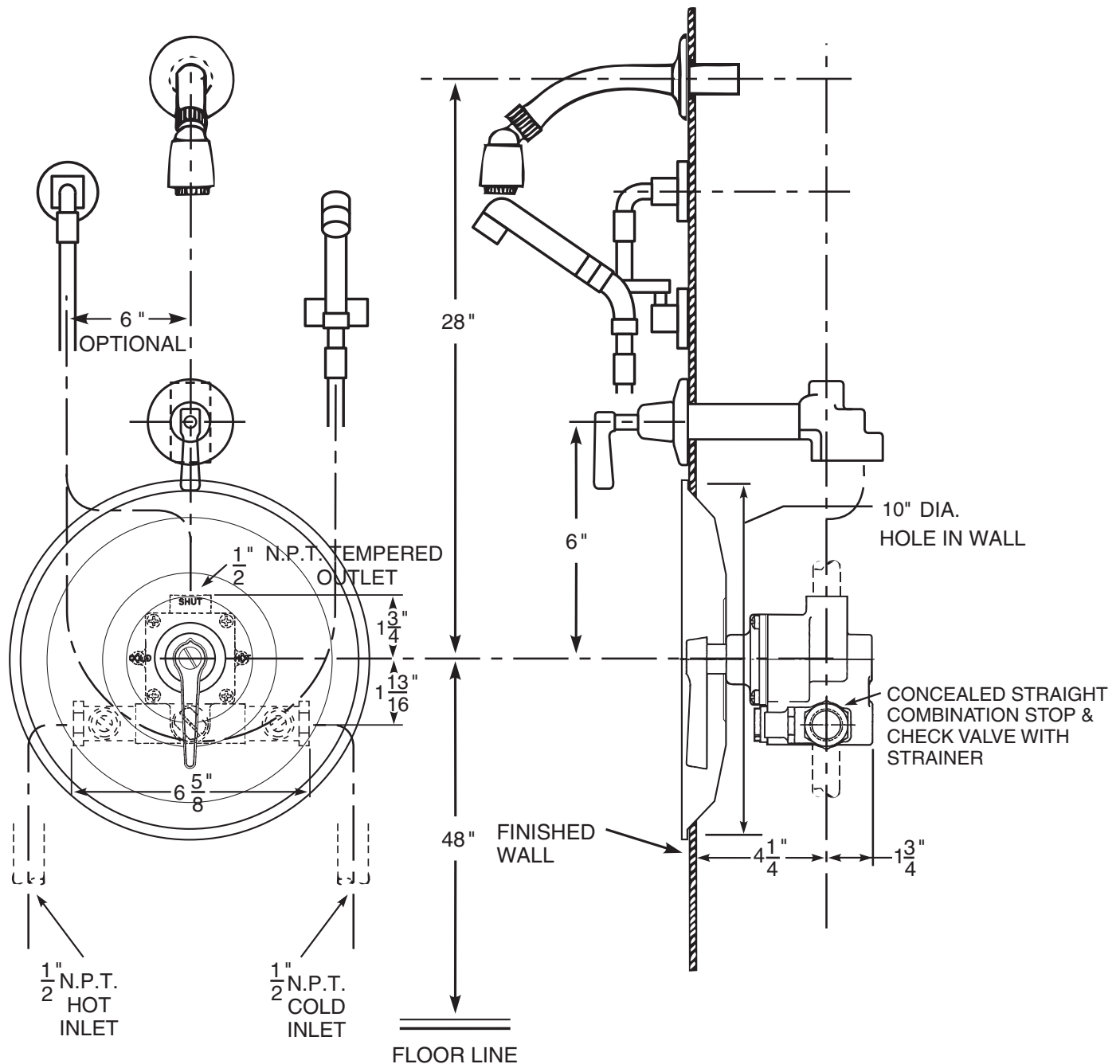


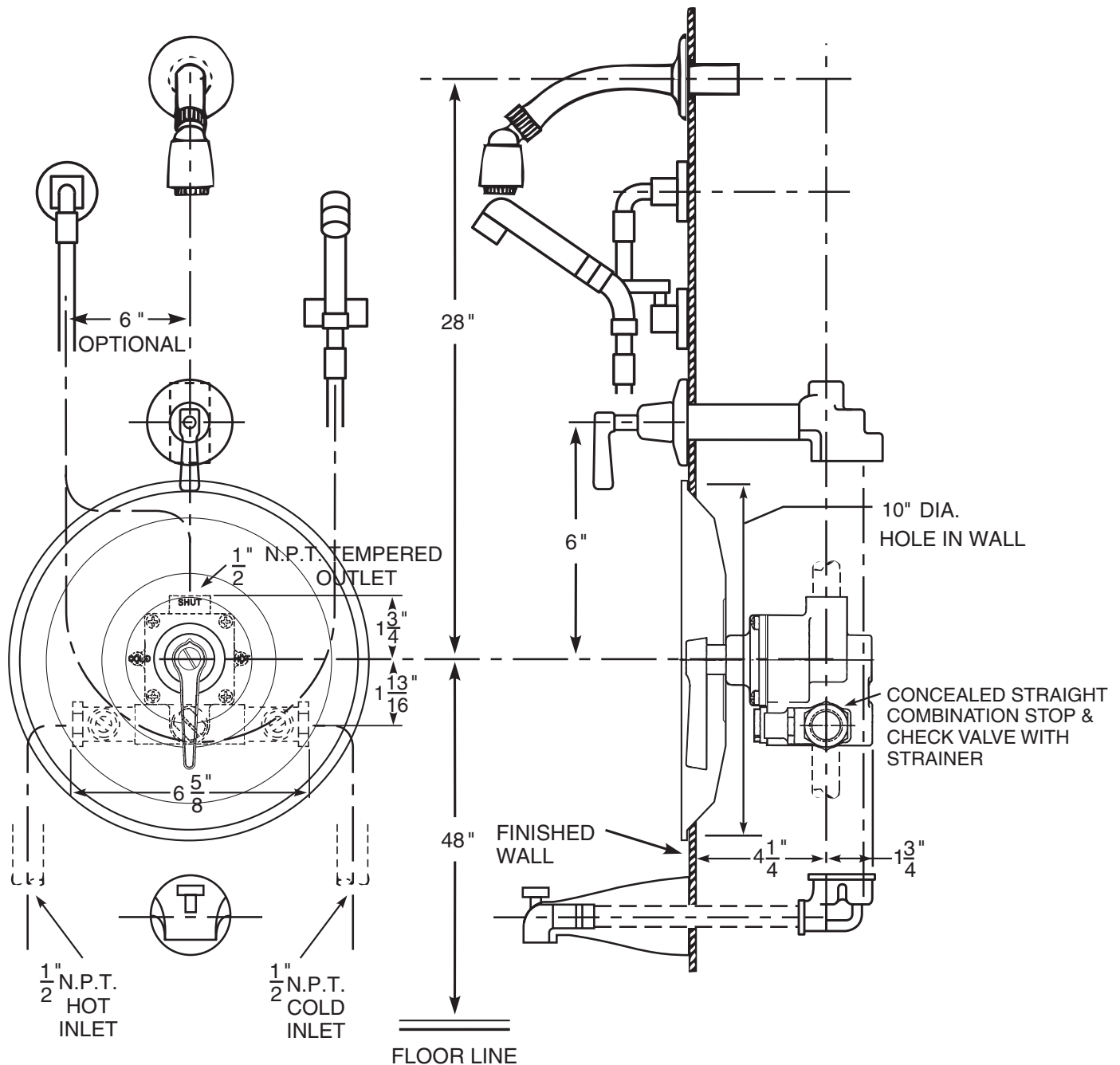
## Series 7900 Shower Assembly

Series 7900 thermostatic mixing valve, SC1 straight stop and checks, SH3 shower head, arm and flange, HS3 hand spray and DV1 diverter valve. If the angle stop and checks with removable strainers are required, see ENG 7900 B for details.



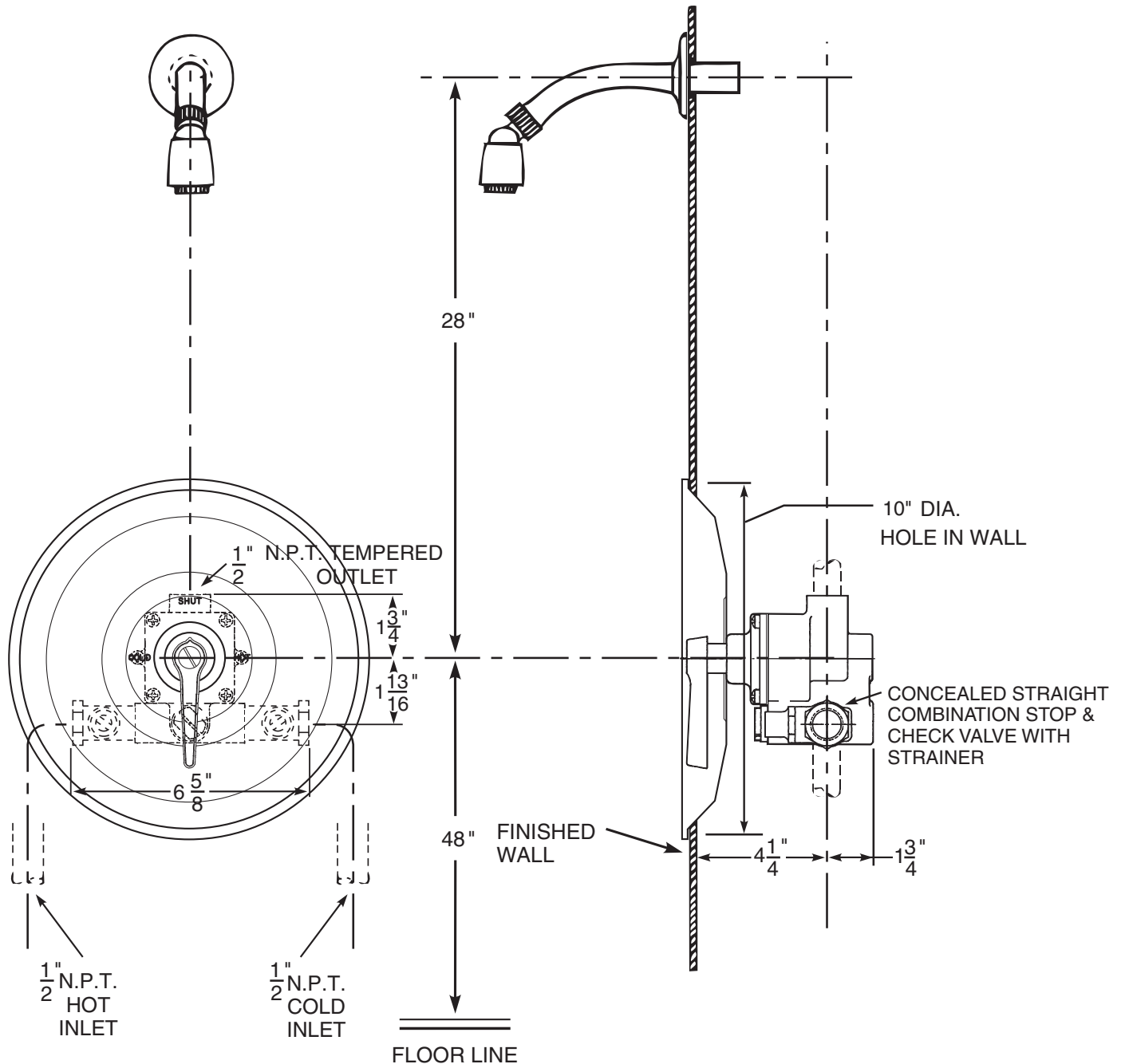
## Series 7900 Shower Assembly

Series 7900 thermostatic mixing valve, SC1 straight stop and checks, SH2 shower head, arm and flange, HS1 hand spray, DV1 diverter valve and TF2 diverter tub filler. If the angle stop and checks with removable strainers are required, see ENG 7900 B for details.



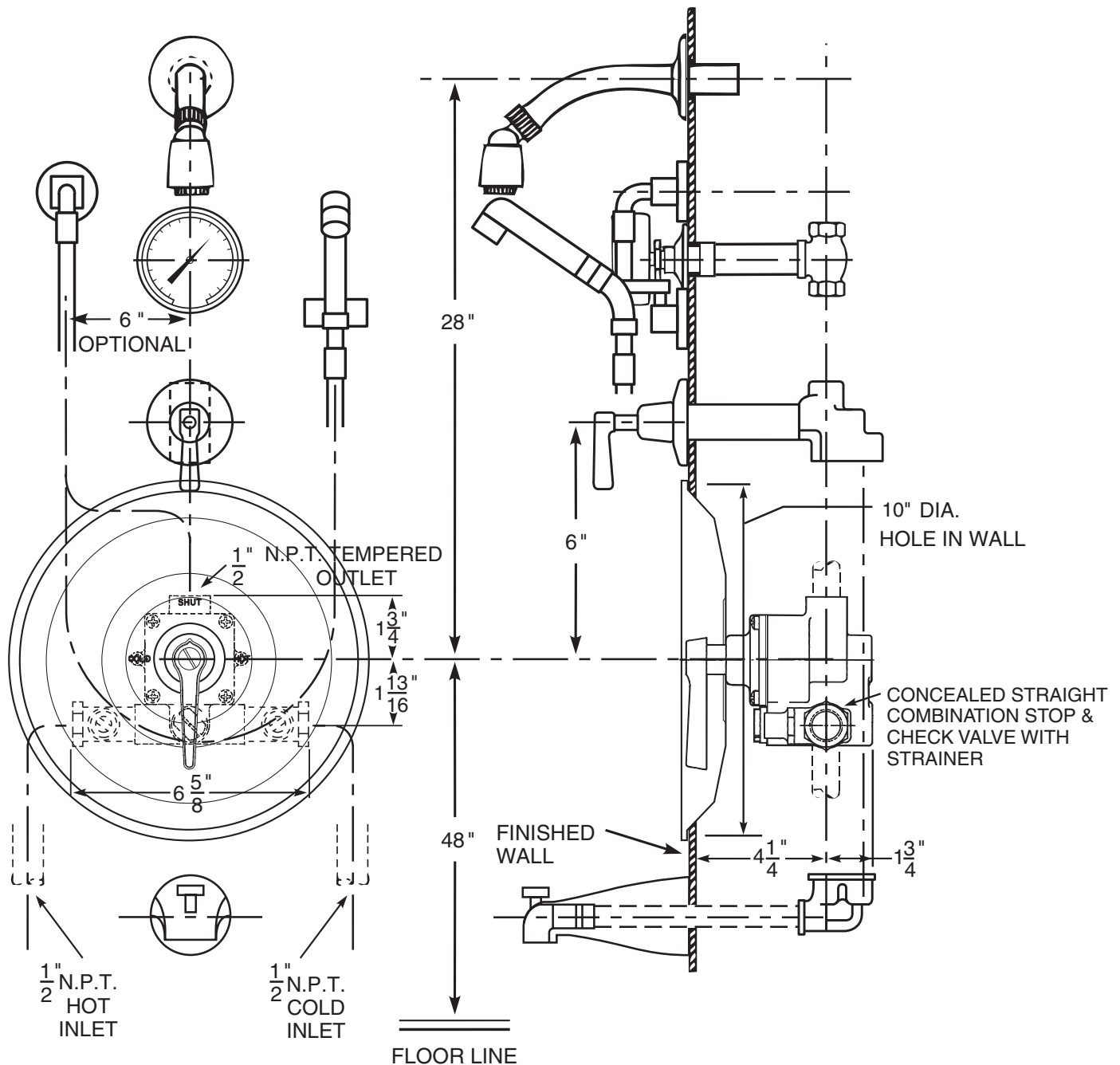
## Series 7900 Shower Assembly

Series 7900 thermostatic mixing valve, SC1 straight stop and checks and SH2 shower head, arm and flange. If the angle stop and checks with removable strainers are required, see ENG 7900 B for details.



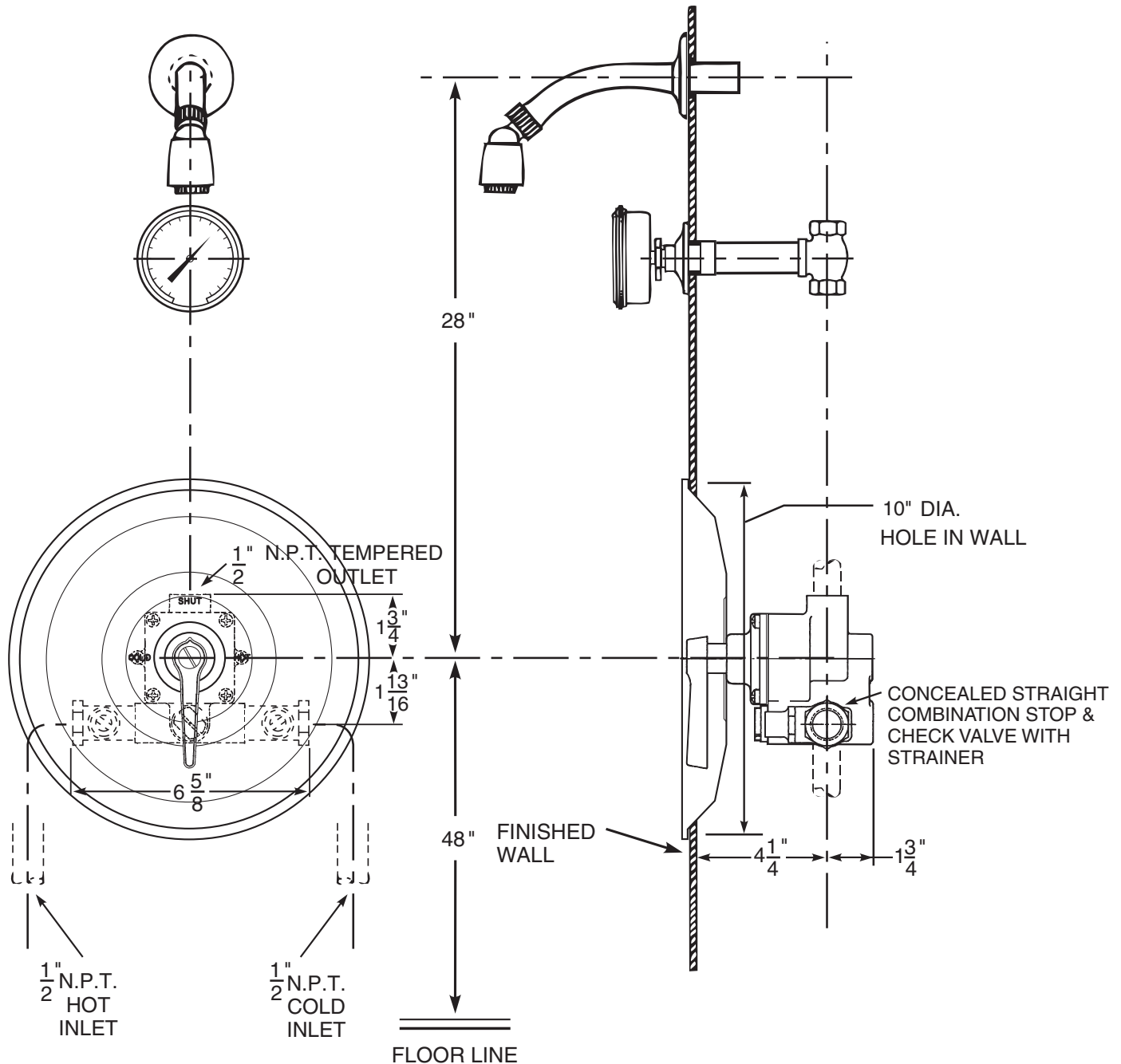
## Series 7900 Shower Assembly

Series 7900 thermostatic mixing valve, SC1 straight stop and checks, SH2 shower head, arm and flange, HS3 hand spray, TH5 dial thermometer, DV1 diverter valve and TF2 diverter tub filler. If the angle stop and checks with removable strainers are required, see ENG 7900 B for details.



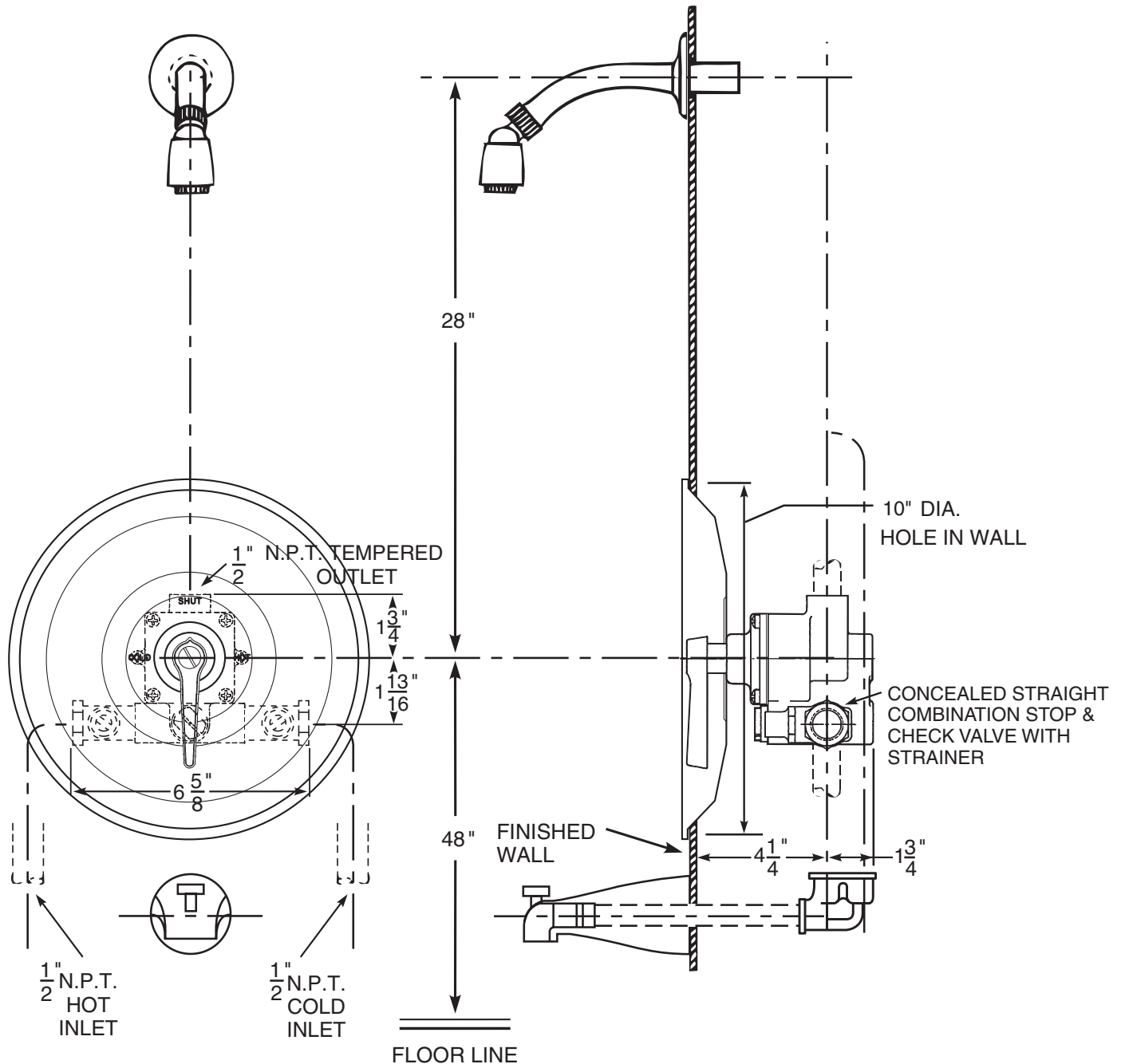
## Series 7900 Shower Assembly

Series 7900 thermostatic mixing valve, SC1 straight stop and checks, SH2 shower head, arm and flange and TH4 dial thermometer. If the angle stop and checks with removable strainers are required, see 7900 B for details.



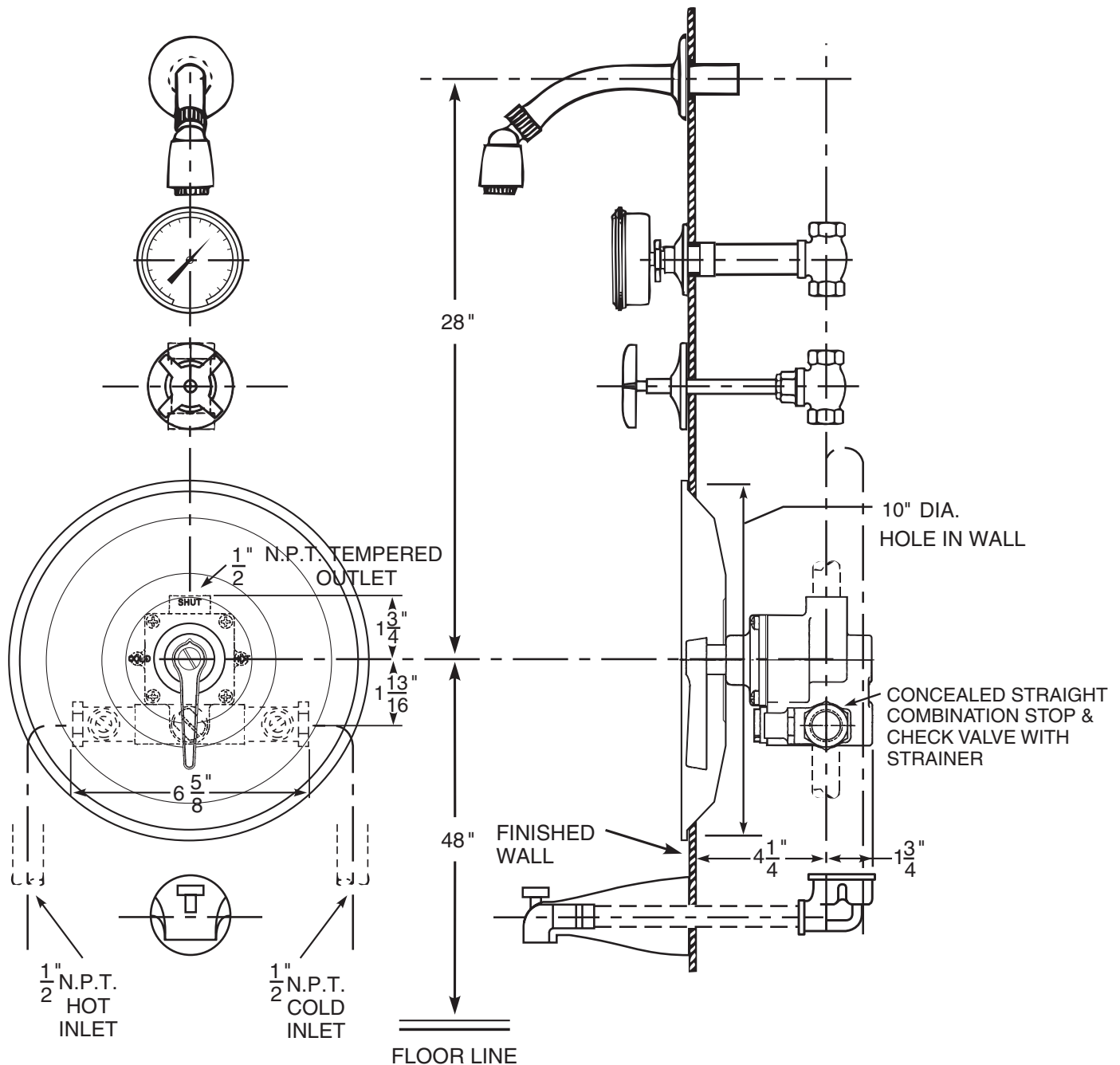
## Series 7900 Shower Assembly

Series 7900 thermostatic mixing valve, SC1 straight stop and checks, SH2 shower head, arm and flange and TF2 diverter tub filler. If the angle stop and checks with removable strainers are required, see ENG 7900 B for details.



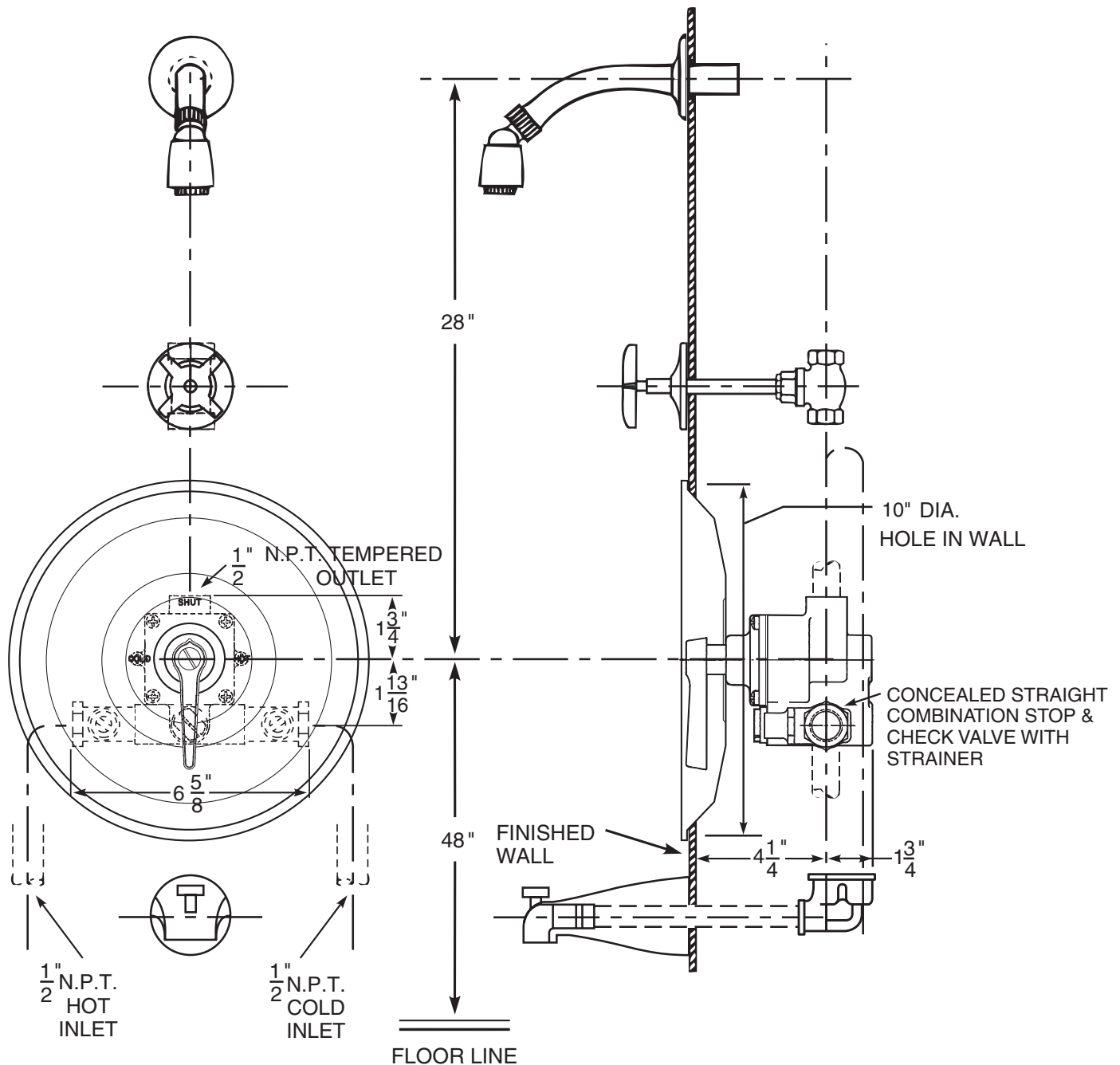
## Series 7900 Shower Assembly

Series 7900 thermostatic mixing valve, SC1 straight stop and checks, SH2 shower head, arm and flange, TH5 dial thermometer, VC3 concealed volume control and TF2 diverter tub filler. If the angle stop and checks with removable strainers are required, see ENG 7900 B for details.



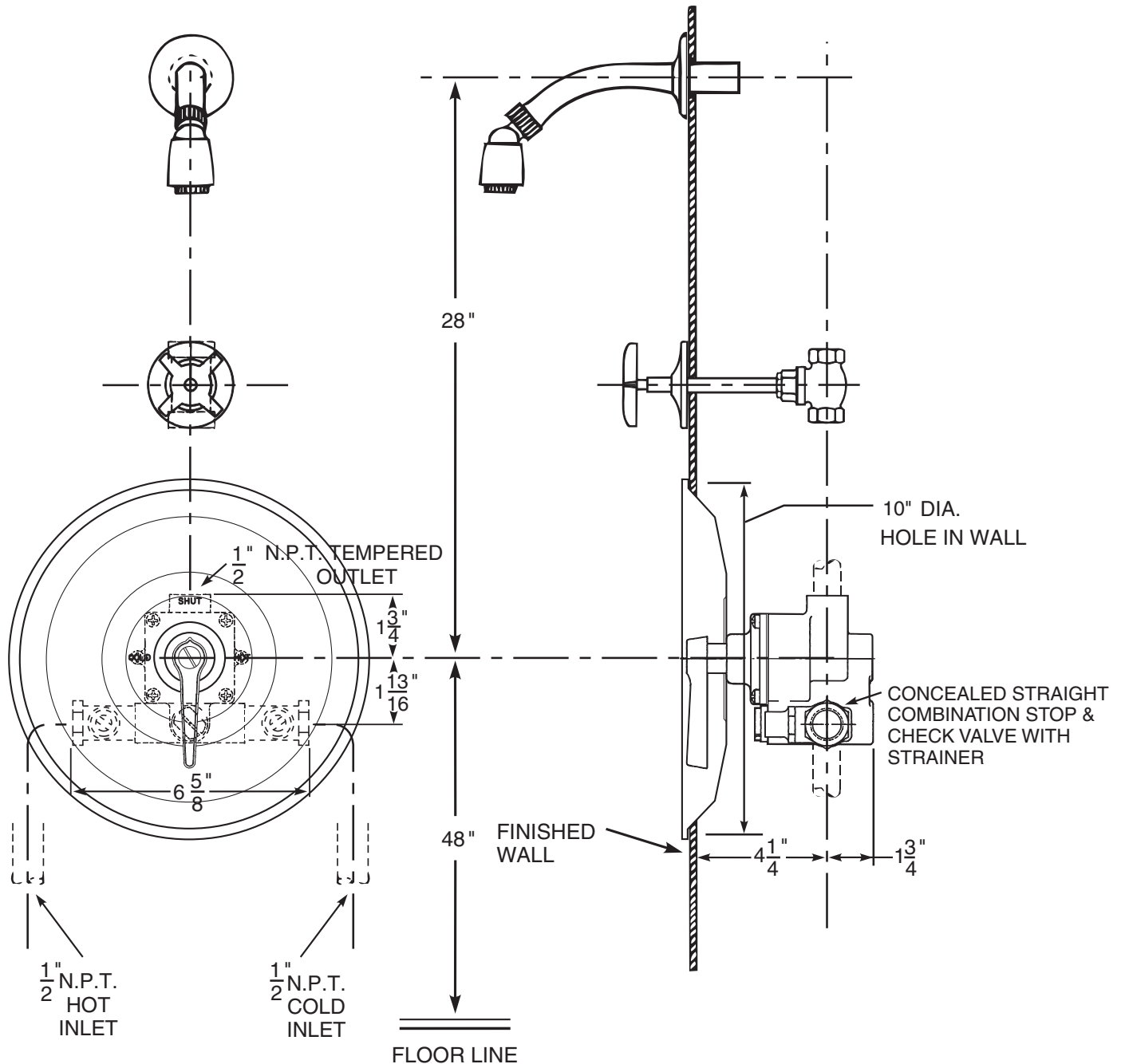
## Series 7900 Shower Assembly

Series 7900 thermostatic mixing valve, SC1 straight stop and checks, SH2 shower head, arm and flange, VC3 concealed volume control and TF2 diverter tub filler. If the angle stop and checks with removable strainers are required, see ENG 7900 B for details.



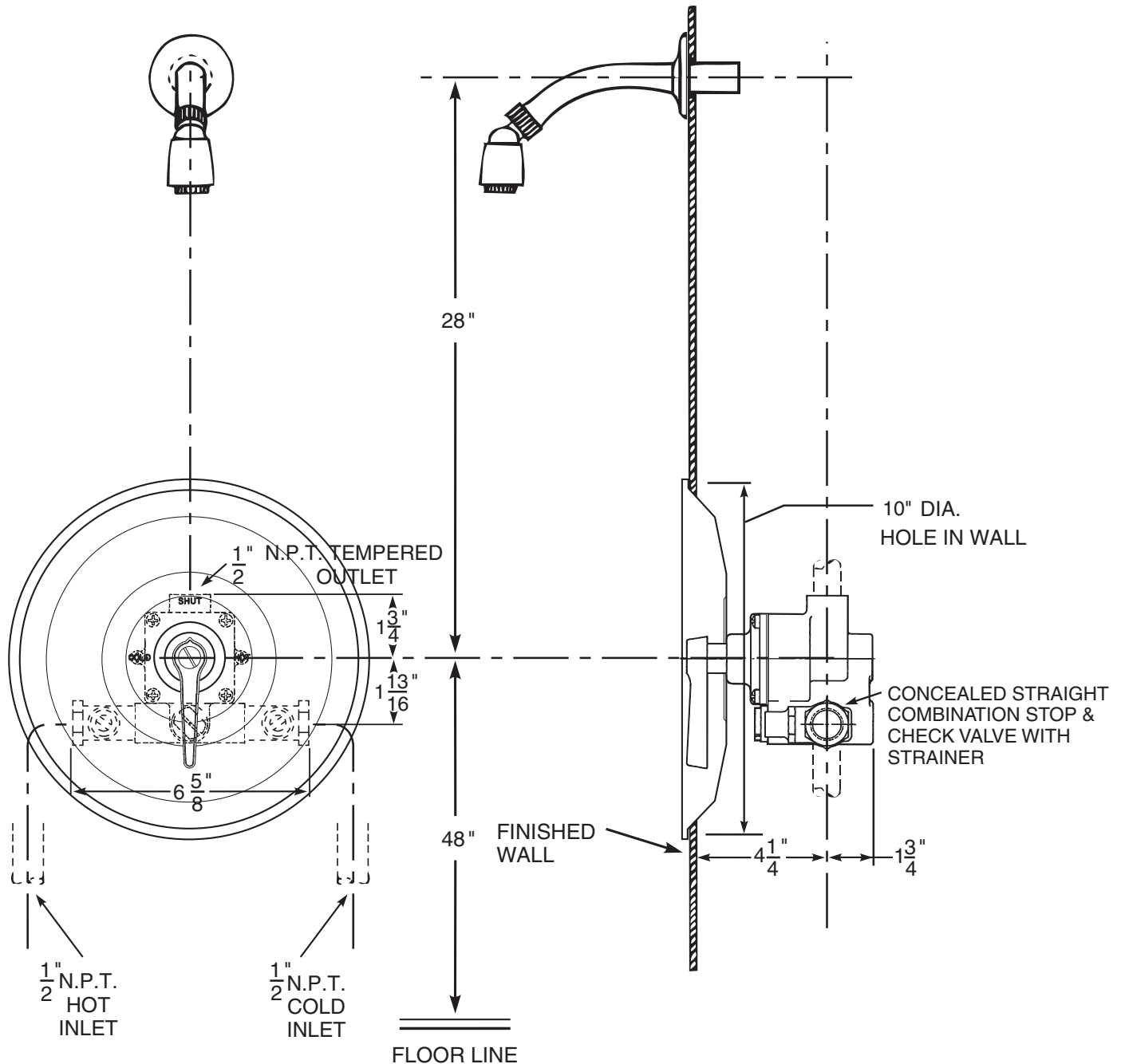
## Series 7900 Shower Assembly

Series 7900 thermostatic mixing valve, SC1 straight stop and checks, SH2 shower head, arm and flange and VC3 concealed volume control. If the angle stop and checks with removable strainers are required, see ENG 7900 B for details.



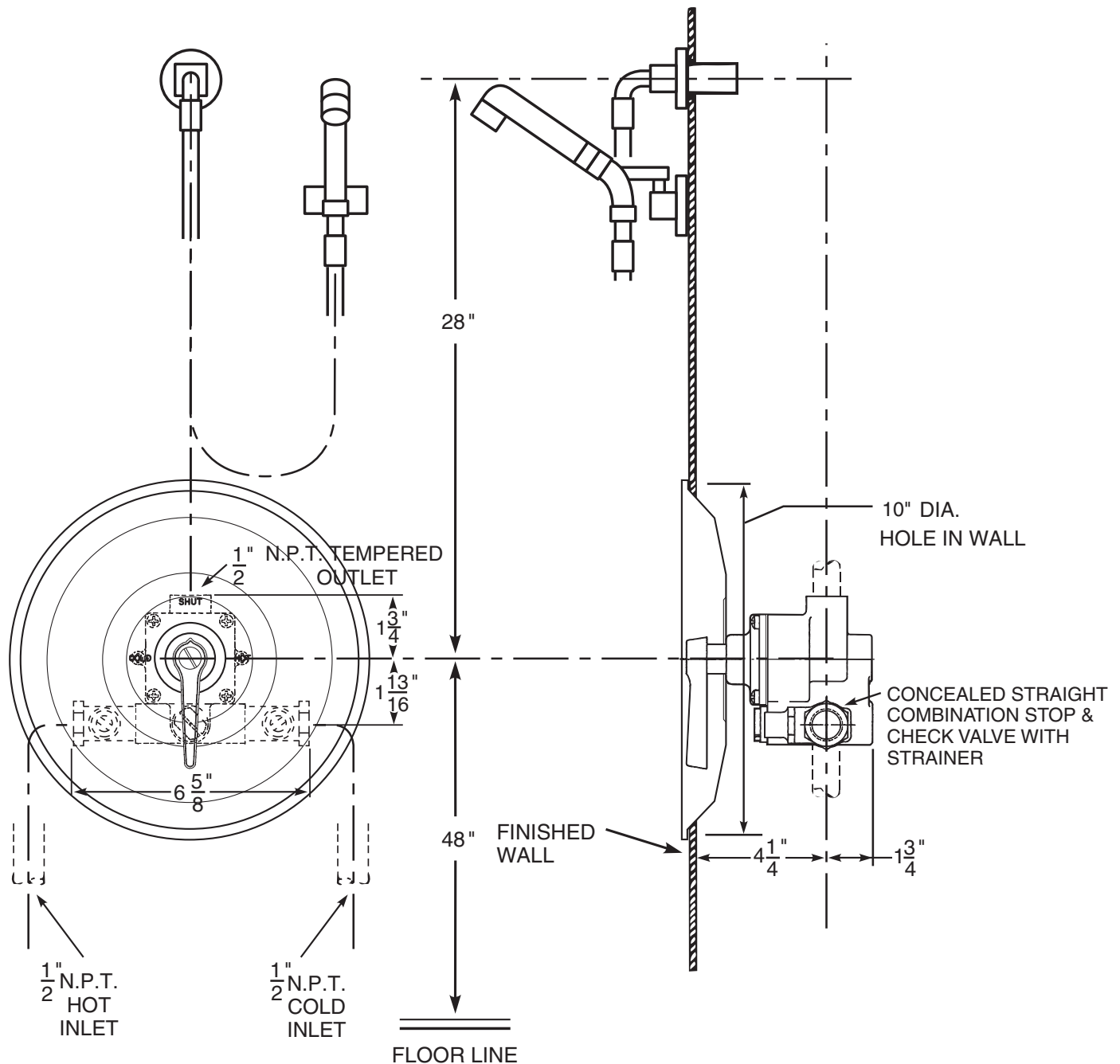
## Series 7900 Shower Assembly

Series 7900 thermostatic mixing valve, SC1 straight stop and checks and SH2 shower head, arm and flange. If the angle stop and checks with removable strainers are required, see ENG 7900 B for details.



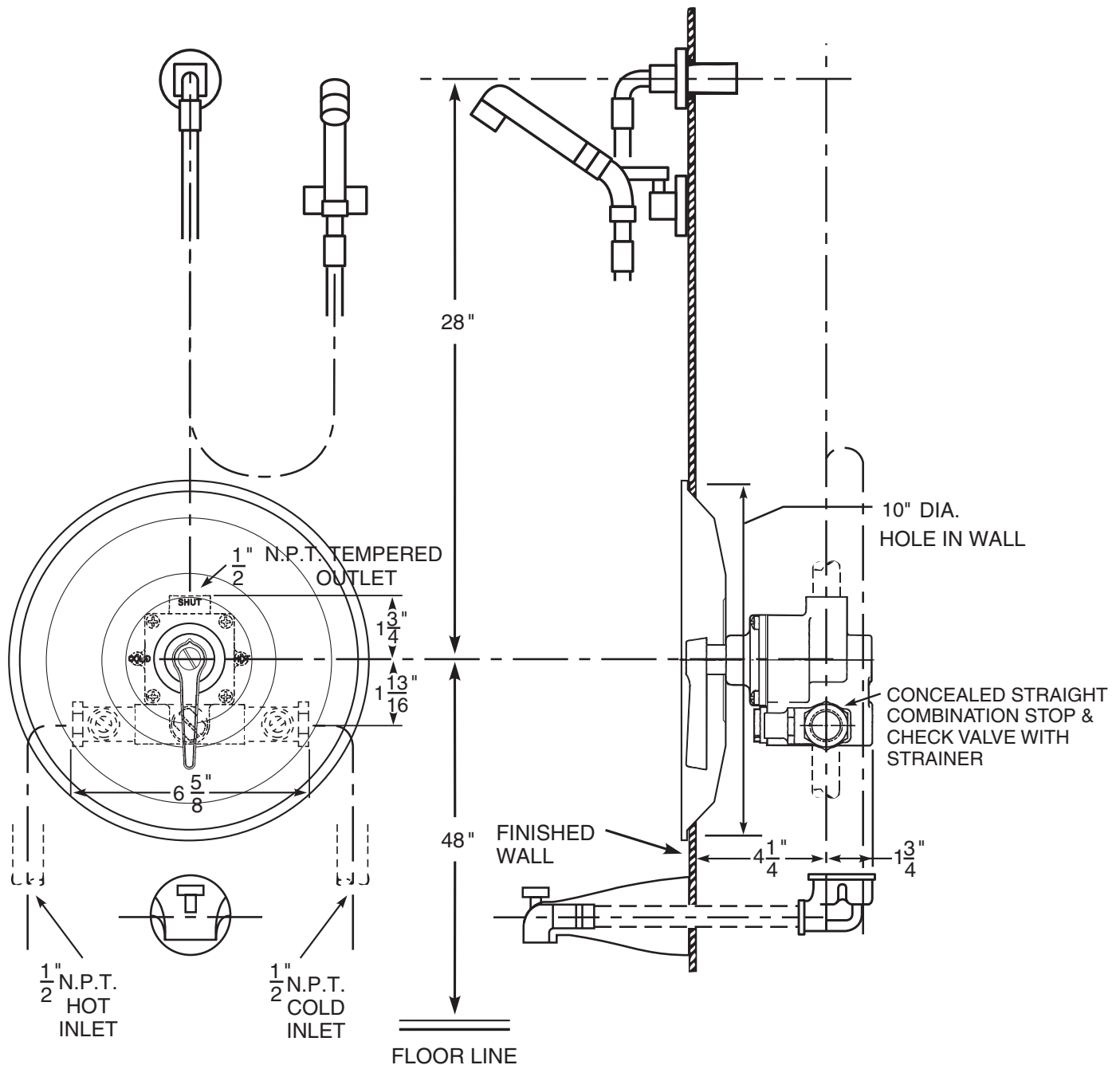
## Series 7900 Shower Assembly

Series 7900 thermostatic mixing valve, SC1 straight stop and checks and HS3 hand spray. If the angle stop and checks with removable strainers are required, see ENG 7900 B for details.



## Series 7900 Shower Assembly

Series 7900 thermostatic mixing valve, SC1 straight stop and checks and HS3 hand spray and TF2 diverter tub filler. If the angle stop and checks with removable strainers are required, see ENG 7900 B for details.



## Series 7900 Shower Assembly

Series 7900 thermostatic mixing valve, SC1 straight stop and checks and SH6 institutional shower head. If the angle stop and checks with removable strainers are required, see ENG 7900 B for details.

