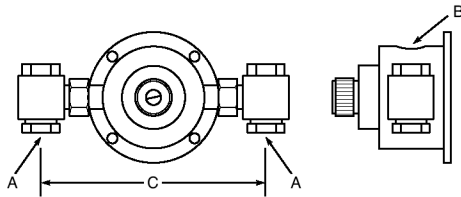


ENG. NO#72906-G
 ENG. NO#72907-G
 PAT. NO. 5,011,074.



Series 61 Thermostatic Water Controller

Unit No. 72906 (1/2")
 Unit No. 72907 (3/4")



Certified to
 CSA B125.3

ASSE Lead Free
 Certified

ASSE 1017 Approved



Exposed mixing valve shall be of the thermostatic type with liquid-filled motor. In the event of interruption of hot or cold water supply or thermostat failure, the valve shall be designed to restrict flow by use of a sliding piston control mechanism with reverse seat closure. The valve shall maintain output temperature for changes in inlet pressures or temperature. Valve construction shall have bronze body and stainless steel piston and liner. Piped and cabinet assemblies which have a downstream shutoff device shall include union end stop and check valves with removable strainer on each inlet.

FINISH: Bronze Valve 1/2"
 Polished Chrome 3/4"
 Other

All exposed surfaces are polished chrome plated.

TEMP. RANGE **SET POINT**

50° to 100° F 80° F
 85° to 135° F 110° F
 100° to 150° F 130° F
 Special _____

DIMENSIONS:

Valve No.	A N.P.T.	B N.P.T.	C
61-10	1/2"	1/2"	8 1/2"
61-15	1/2"	1/2"	8 1/2"
61-25	3/4"	3/4"	8 5/8"

CAPACITIES - SERIES 61

Pressure Drop PSI	5	10	20	30	45	60	80
Valve Number	Capacity-GPM						
61-10	2.5	3.5	5.5	8.0	10	12	14
61-15	3.5	5.5	8.5	11	15	18	20
61-25	6.0	10	14	18	25	30	34

CAPACITIES - LPM SERIES 61

Pressure Drop PSI	5	10	20	30	45	60	80
Valve Number	Capacity-LPM						
61-10	9.4	13.2	22.8	30.3	37.8	45.4	53
61-15	13.2	20.8	32	41.6	56.7	68	75.7
61-25	22.7	37.8	53	68	94.6	113	128

Minimum flow for 61-10 & 61-15 is 1/2 Gallon Per Minute
 Minimum flow for 61-25 is 1 Gallon Per Minute



MANUFACTURING CO., INC.

5330 East 25th Street
 Indianapolis, Indiana 46218
 Phone (317) 261-1212
 Fax (317) 261-1208

Design and specification subject to change without notice.